

Basics of dermoscopy

part 2

Joanna Golińska

Department of Dermatology,
Medical University of Warsaw



Basal cell carcinoma

Negative dermoscopic features:

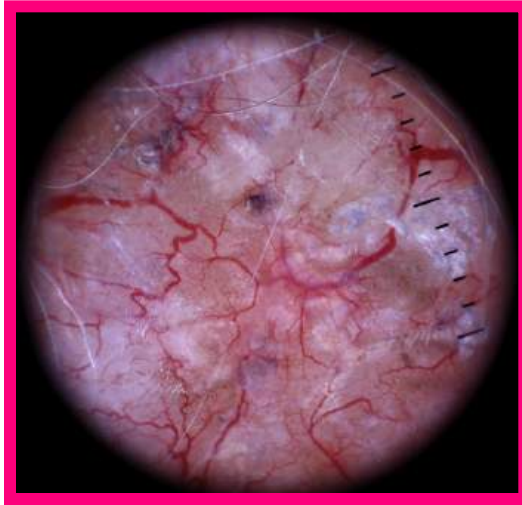
- No pigment network

Positive dermoscopic features:

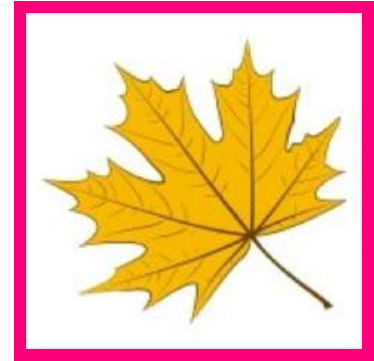
- Arborising/branching vessels
- Blue-grey ovoid nests
- Multiple blue-grey dots
- Leaf-like areas
- Spoke wheel-like structures
- Ulceration



BCC - Arborising/branching vessels



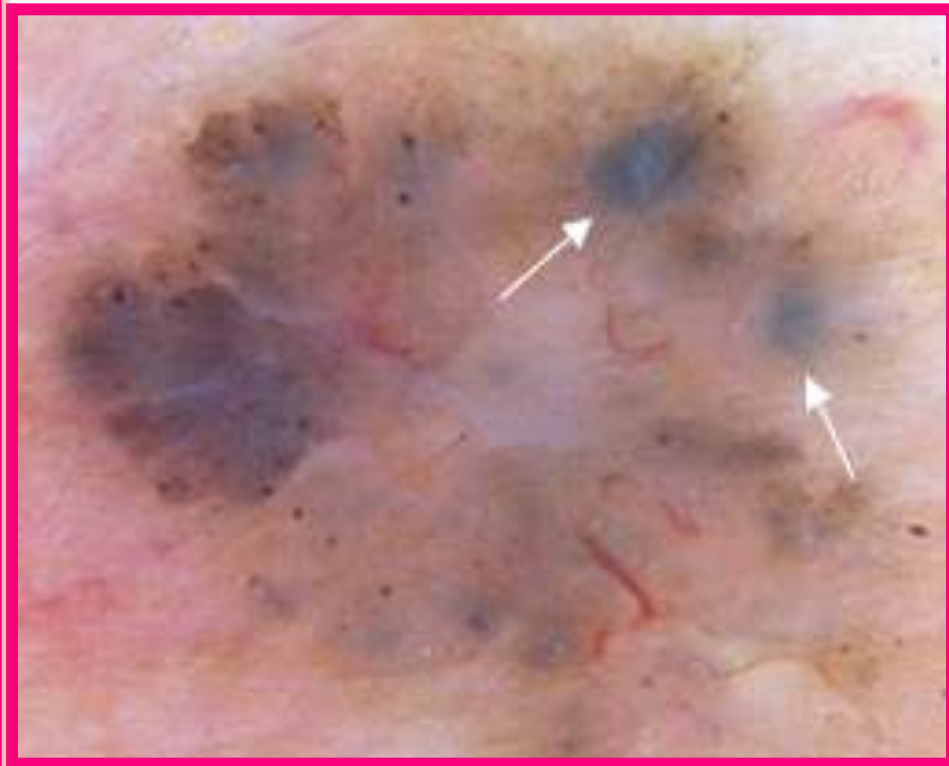
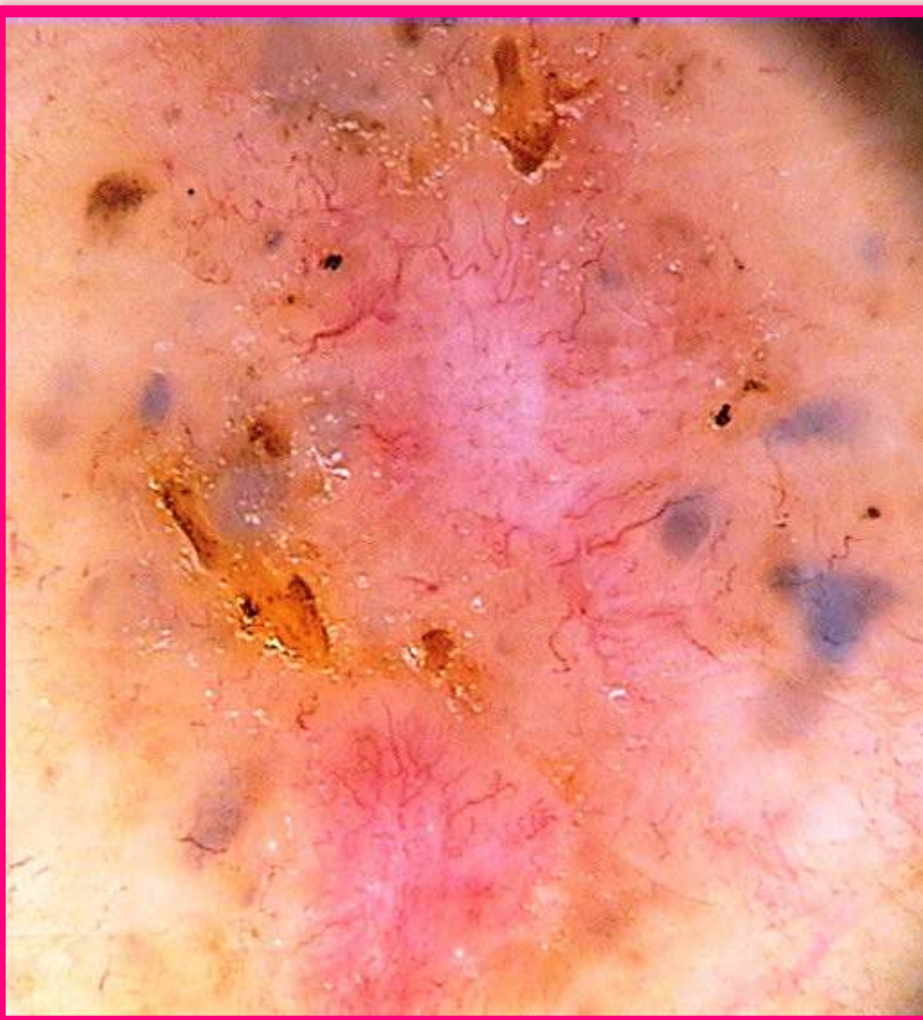
BCC - Leaf-like areas



BCC - Spoke wheel-like structures



BCC – ovoid nests



- 1) Actinic keratosis (AK)
- 2) Bowen's disease (BD)
- 3) Squamous cell carcinoma(SCC)

Dermoscopic features

- ✦ No pigment pattern
- ✦ Vascular pattern

Clinical features

- ✦ erythema
- ✦ desquamation
- ✦ ulceration



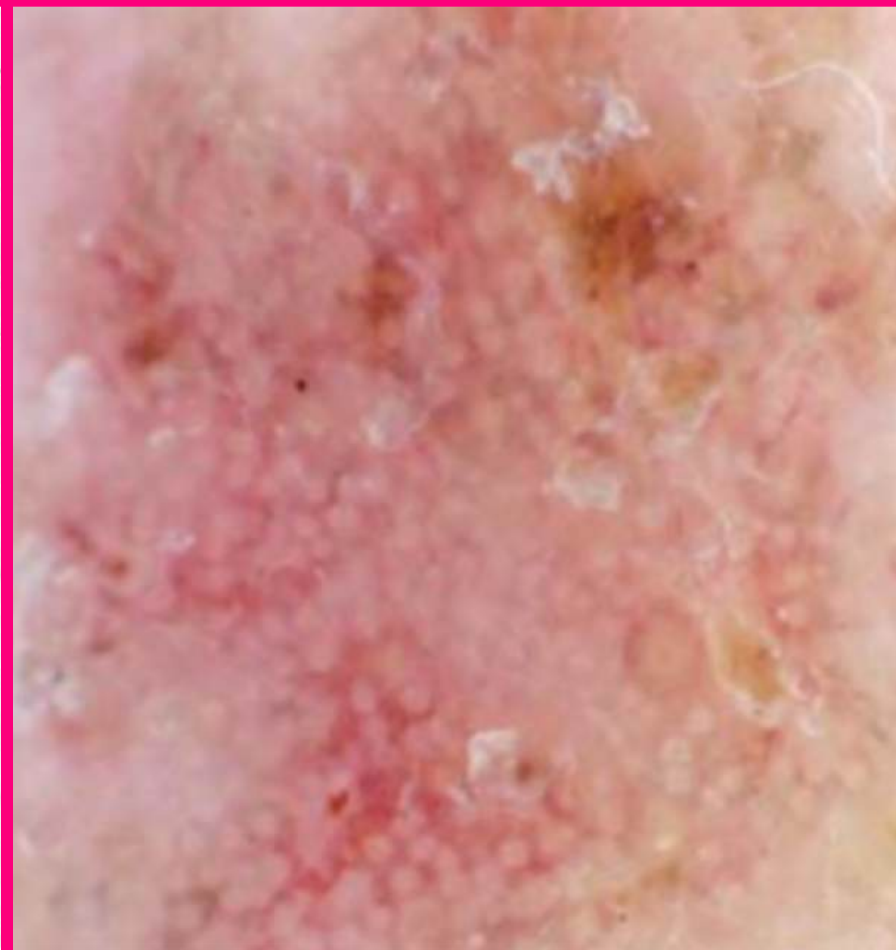
Actinic keratosis

- ★ Strawberry pattern
- ★ pseudonetwork => white circles on pink background
- ★ White, white-yellowish scale
- ★ Dark brown or blue streaks
- ★ dotted and glomerular vessels
- ★ Follicular openings surrounded with white halo
- ★ Rossets

AK- strawberry pattern



AK- strawberry pattern in comparison to pigmented network



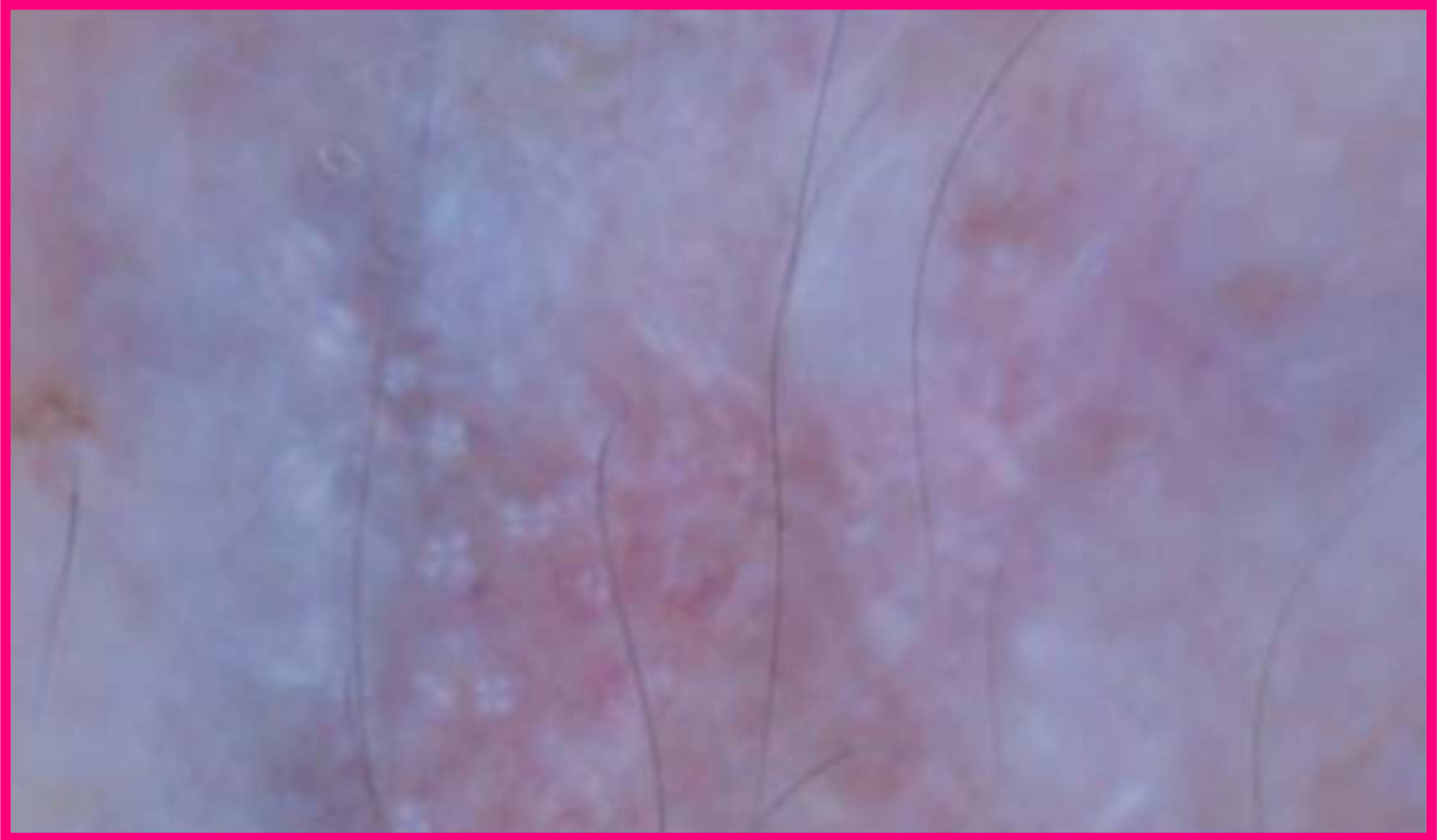
AK- strawberry pattern



AK white, yellowish scales

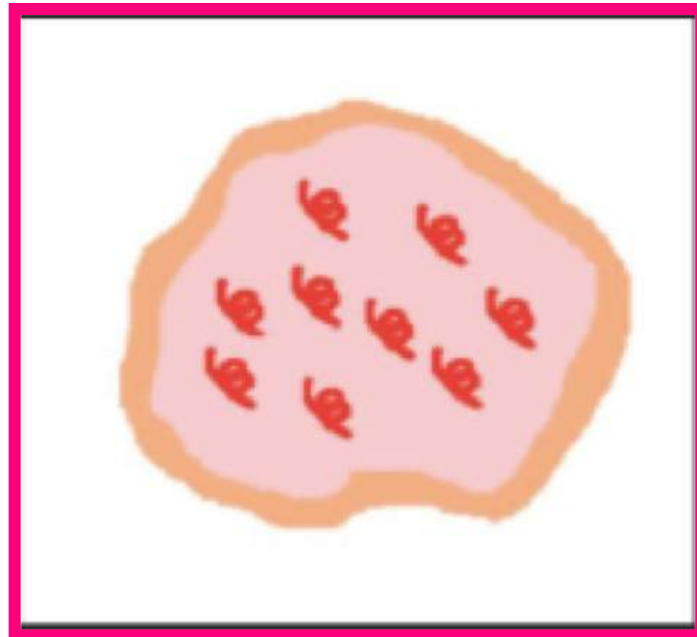


Rosettes



Bowen's disease

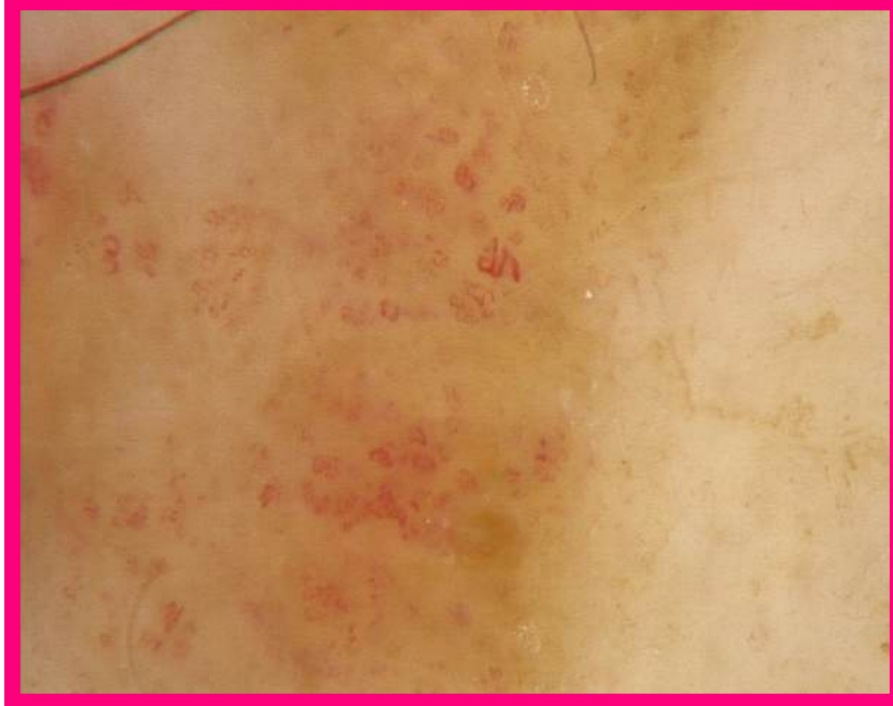
- ✦ dotted vessels
- ✦ glomerular vessel
- ✦ white halo encircling hair follicles

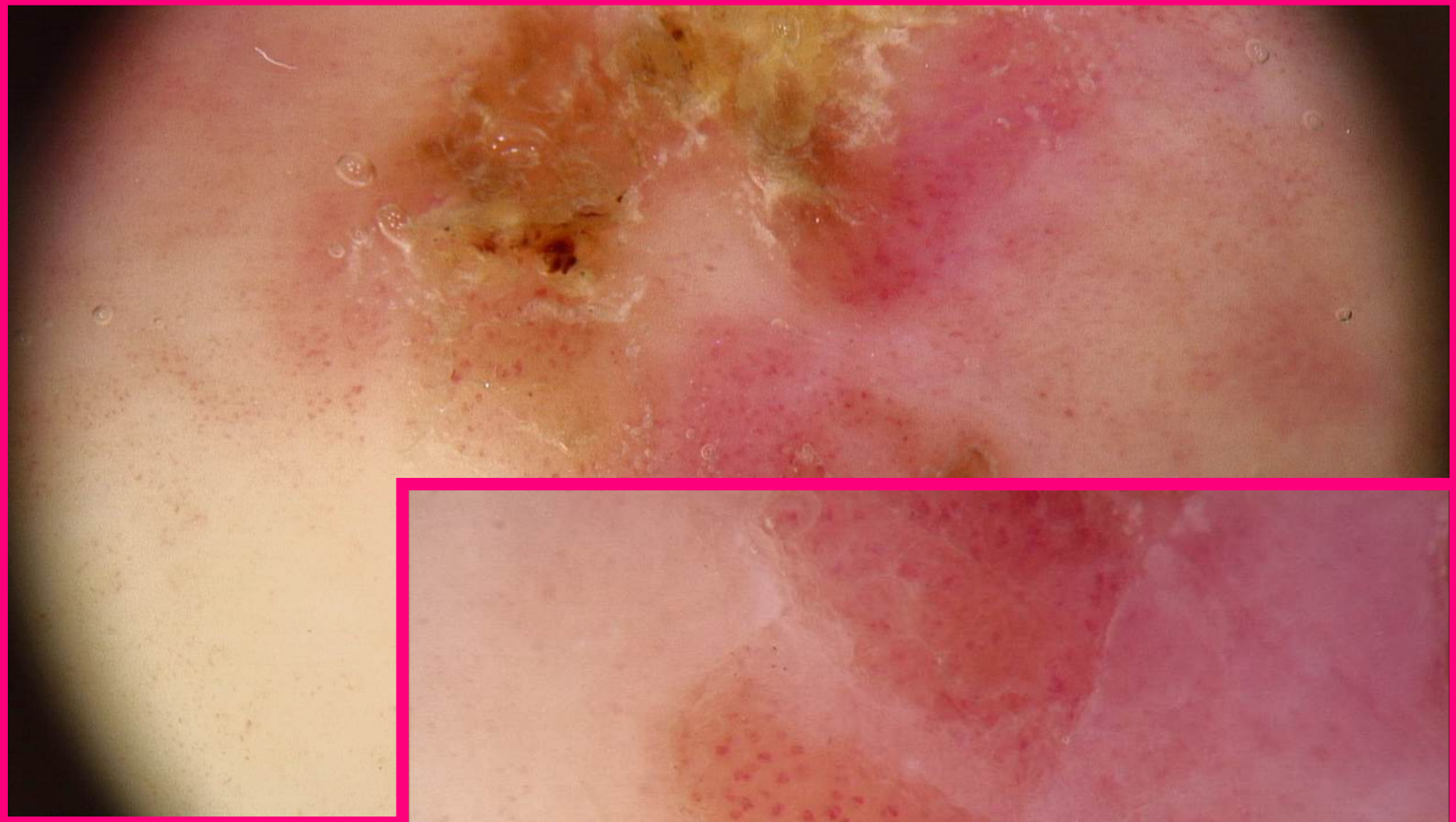


Bowen's disease



Bowen's disease





Bowen's
disease

Squamous cell carcinoma - SCC

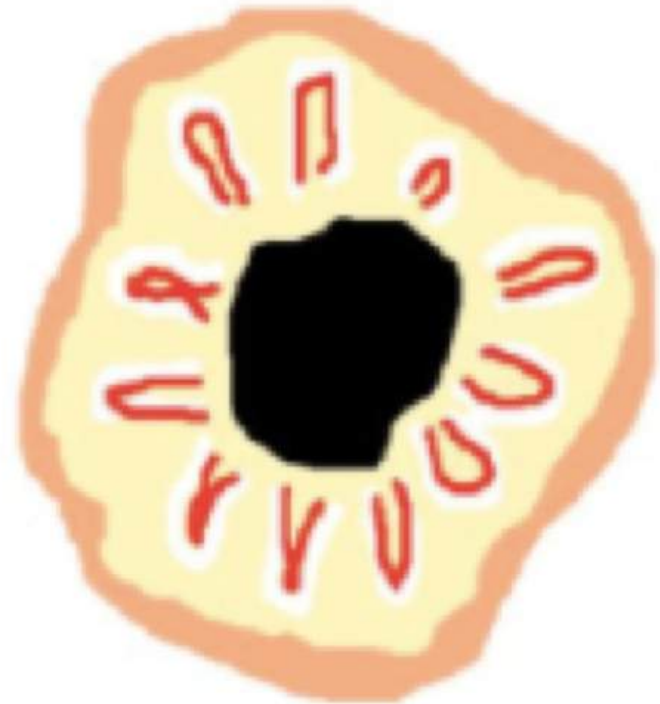
Vessels distributed in groups

White or yellowish scales

Central ulceration

Diffused erythema

Red starburst pattern



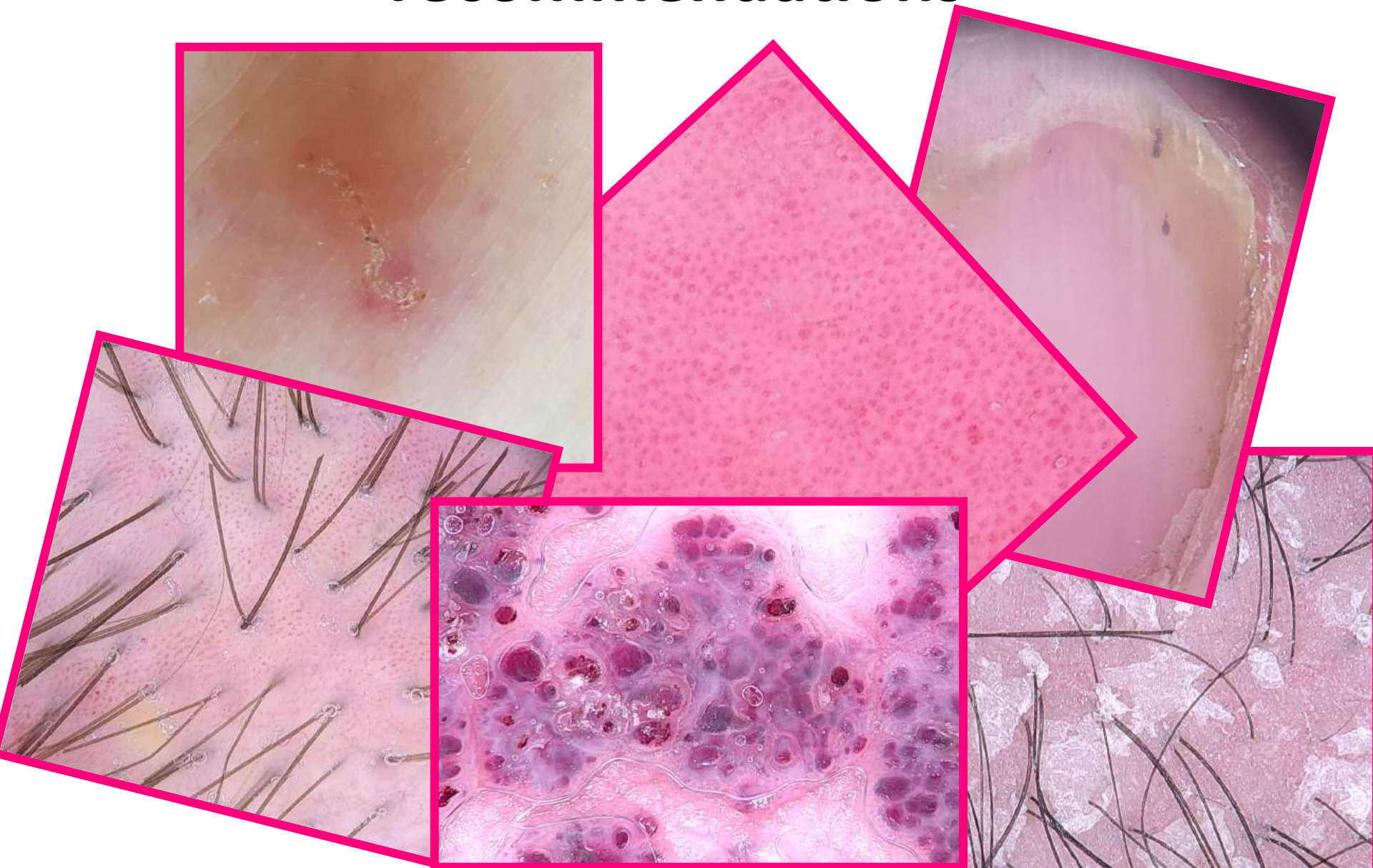
Squamous cell carcinoma





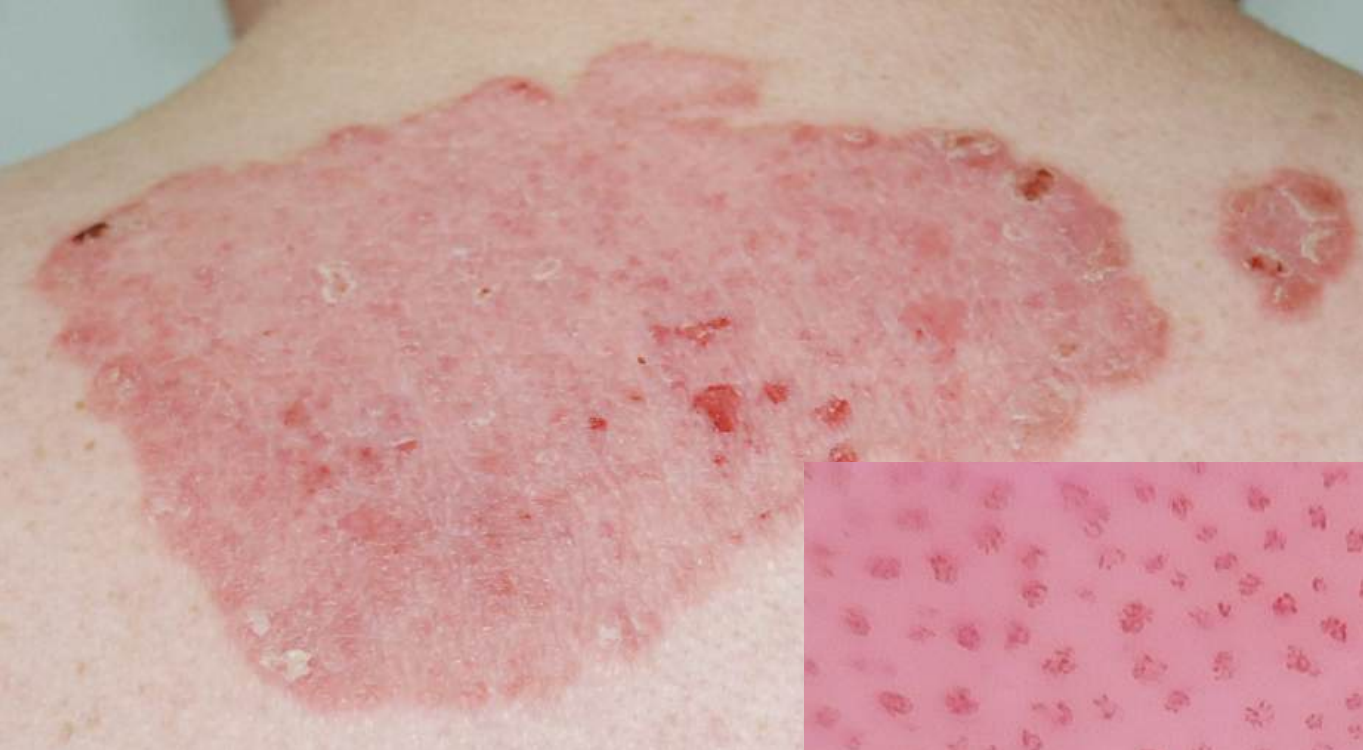
Squamous cell carcinoma

Dermoscopy/videodermoscopy other recommendations

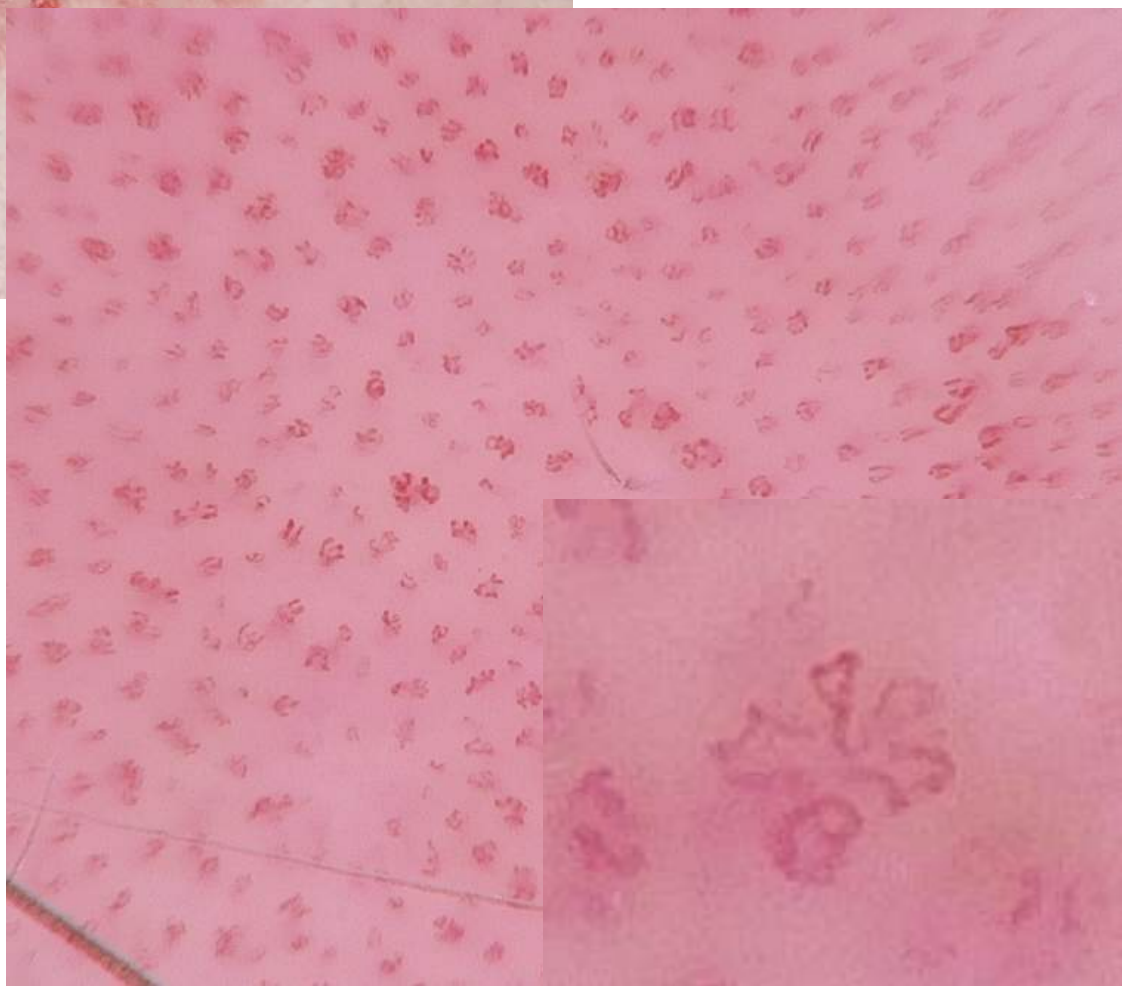




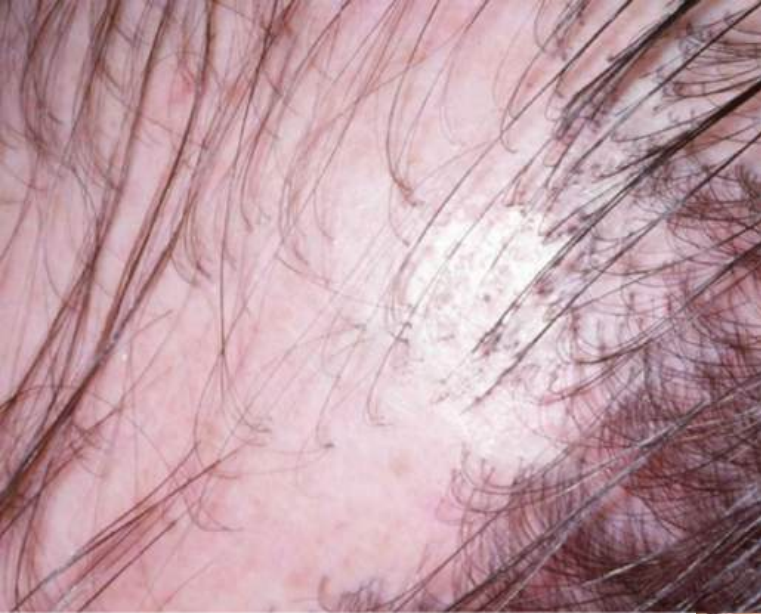
Lichen planus



Psoriasis



Lichen planopilaris





Scabies



Pubic lice